



# Capacity Building Strategy for managers and users of marine protected areas Natura 2000 Network

## *Executive Summary*

### LIFE IP INTEMARES Project

Integrated, innovative and participatory management of  
the Natura 2000 Network in the Spanish marine  
environment





### Authors:

- **Organization:** SUBMON

- **Authors:** Juanita Zorrilla Pujana, Alba Tojeiro Formoso, Carla A. Chicote.

In collaboration with: Anna Lloveras (SUBMON), Carla Laure (SUBMON) and Manel Gazo (University of Barcelona), together with the team from the Biodiversity Foundation and WWF Spain.

### Coordination and review:

Oscar Esparza Alaminos and José Luis García Varas (WWF Spain); Silvia Guadix and Paloma Pacheco (Biodiversity Foundation).

### Publish:

The LIFE IP INTEMARES project, which is coordinated by the Biodiversity Foundation of the Ministry of Ecological Transition and Demographic Challenge, aims to achieve effective management of the marine areas of the Natura 2000 Network, with the science and active participation of the sectors involved.

The partners involved are the Ministry's own Directorate General for Biodiversity, Forests and Desertification, the IEO, CEPESCA, SEO/BirdLife and WWF-Spain. It has the financial contribution of the European Union's LIFE programme, among other sources of funding.

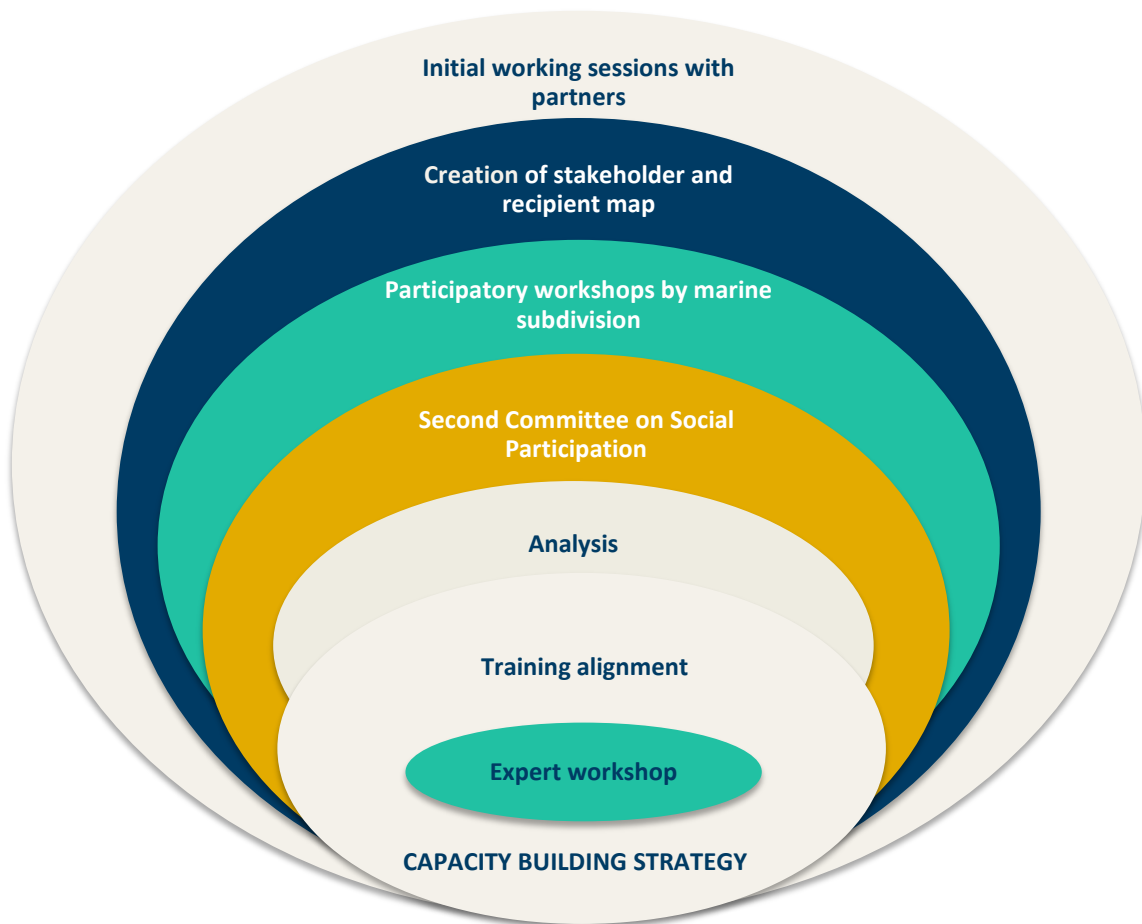


**Period of activity:** October 2017-December 2018. Publication: December 2019.

This work has been carried out thanks to the involvement of a large number of people and entities related to the marine areas that make up the Natura 2000 Network.

## Executive Summary

This strategy has been developed **with the aim of meeting all training and educational needs** with reference to the achievement of the objectives outlined by the marine Natura 2000 Network, within the LIFE IP INTEMARES project period (2018-2024). It has been carried out by a team of experts in marine Natura 2000 Network management, marine conservation or marine governance, and education, training and participation. Figure 1 demonstrates the different stages of the process that have been followed in order to reach the current strategy.



**Figure 1.** Diagram of the development of the Capacity Building Strategy and the different stages of the participatory process.

The strategy has facilitated the development of a **detailed analysis of interested parties, consisting of more than 2000 individuals and/or entities** related in one way or another to the education/training and conservation of both habitats and species in the Natura 2000 Network, whether that be as key players or recipients of the strategy itself.

More than **250 individuals from different groups** have participated in order to carry out the plan of action, of which 100 have participated in the 9 workshops that have taken place in 9 cities within the



territory, in the 5 marine subdivisions established by the Marine Strategies Framework Directive. The following outlines the framework of the participatory process that has been followed (Figure 2).



Figure 2. Participatory process framework carried out in order to develop the Capacity Building Strategy.

The Collective Intelligence (CI) methodology was implemented during the **participatory consultation process**, and is a term used to define a process of collective or group intelligence that comes as a result of the collaboration, collective efforts and the competency of many individuals, and appears in the consensus decision-making. One of the referential points of this strategy was the establishment of an inclusive and dynamic participatory system based on the detection of real needs on a territorial scale, with a balanced sectorial representation and that would transform the strategy into a cross-disciplinary document, at the same time as being functional and with a strong geographical component.

During the participatory process, **335 barriers and 246 needs have been identified** and have been implemented in order to generate the options that will help to overcome the barriers and difficulties encountered and satisfy the needs detected, with the objective of achieving a coherent and efficient marine Natura 2000 Network.

As a result of this process, the strategy establishes 6, well-defined topic areas (Figure 3), **including 21 Education and Training programmes**, in addition to an **Action Plan featuring 93 actions** that will be implemented in various phases.

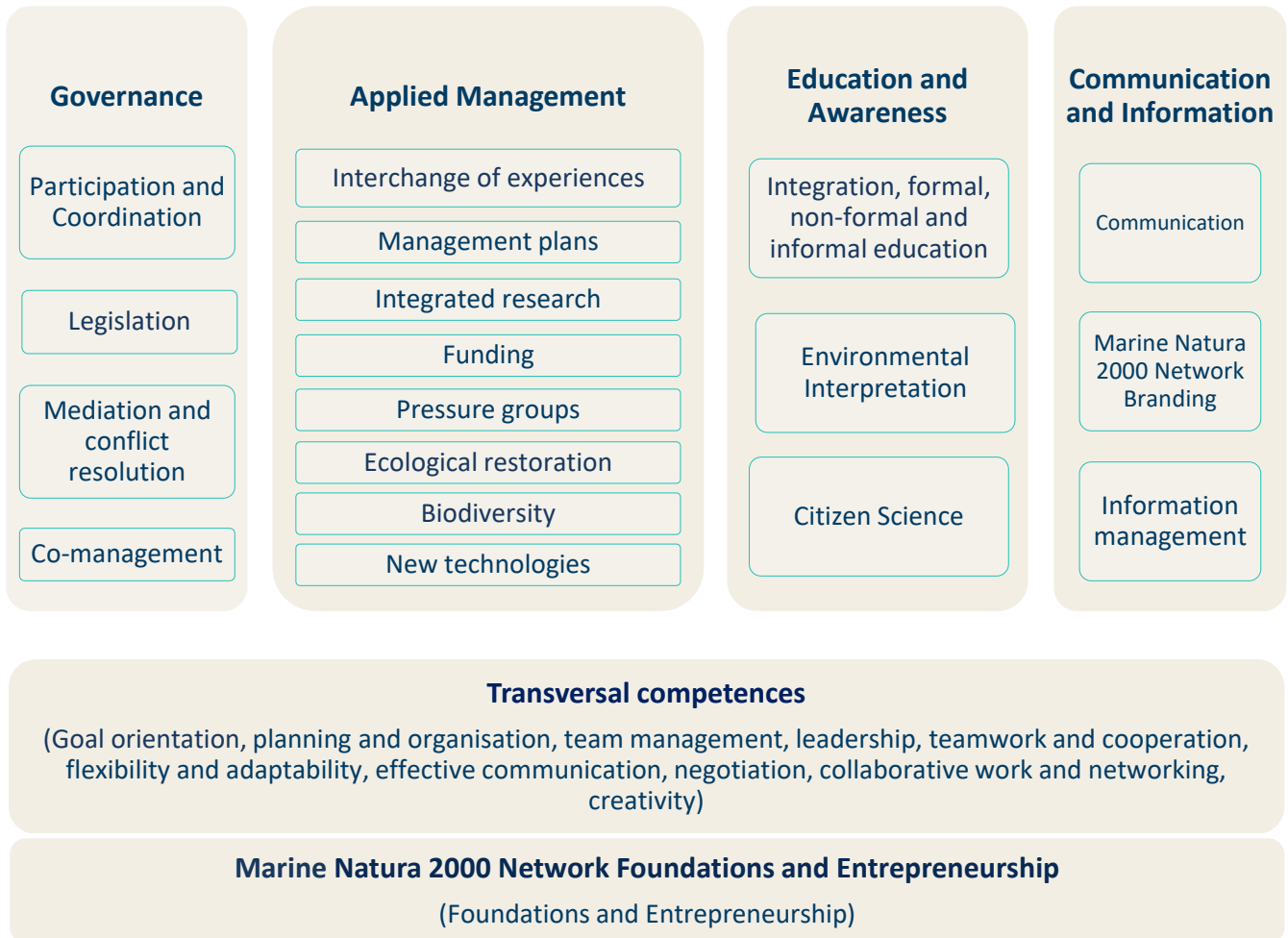


Figure 3. Framework of the Capacity Building Strategy action plan, the subject division and blocks included.

These phases have been determined following the establishment of the **prioritisation criteria**, derived from:

1. Categorisation and vote on the barriers during the participatory process;
2. The prioritised measures in accordance with the “Prioritised Action Framework (2014-2020)” Document: the provisional measures of the new “Prioritised Action Framework (2021-2027)”.
3. The criteria of experts in each of the blocks.

The **implementation plan** is therefore structured as follows: short term (2019-2020), medium term (2021-2022) and long term (2023-2024), however the strategy integrates an implementation beyond the temporary time frame of the LIFE IP INTEMARES project. This time planning **prioritises 6 educational and training programmes**, which take into account prioritisation according to the marine subdivision (Figure 4).



1st Implementation Phase 2019-2020	2nd Implementation Phase 2021-2022	3rd Implementation Phase 2023-2024+
1. Training program to increase <b>participation and improve coordination</b> and achieve a better governance of the marine Natura 2000 Network.	3. Training program in marine Natura 2000 Network <b>regulations</b> and their application, integrating the principle of governance.	12. Training program in new technologies for the management of the marine Natura 2000 Network.
2. Training program in <b>mediation and conflict resolution</b> for environmental, economic and social sustainability in the marine Natura 2000 Network.	5. Training program in <b>public affairs and government relations</b> .	17. Training program in brand management marine Natura 2000 Network.
4. Training program in <b>marine stewardship and co-management</b> .	9. Training program in impact mitigation measures.	18. Training program in information management and dissemination.
6. <b>Experience exchange</b> program in marine Natura 2000 Network management.	10. Training program in project design and fundraising.	
7. Specific training program in <b>efficient management</b> of the marine Natura 2000 Network.	11. Training program in the ecological restoration of the marine Natura 2000 Network.	
8. <b>Research integration program</b> for the management of the marine Natura 2000 Network .	13. Training program in the marine Natura 2000 Network integrated into formal and informal education.	
16. Training program in communication marine Natura 2000 Network.	14. Training program for guides/interpreters of the marine Natura 2000 Network.	
19. Training program in in mixed / transversal competences in the marine Natura 2000 Network.	15. Training program in citizen science.	
20. Training program in the <b>foundations</b> of the marine Natura 2000 Network.	21. Training program in entrepreneurship marine Natura 2000 Network.	

Figure 4. Framework for the Implementation Plan for the Capacity Building Strategy programmes.



Lastly, a monitoring plan has been drawn up setting out indicators at different levels which will make it possible to evaluate the implementation of this strategy and continue to make progress in achieving the objectives of the action plan, and also serve to assess the level of depth at which you want to reach at each stage of its implementation (Figure 5).

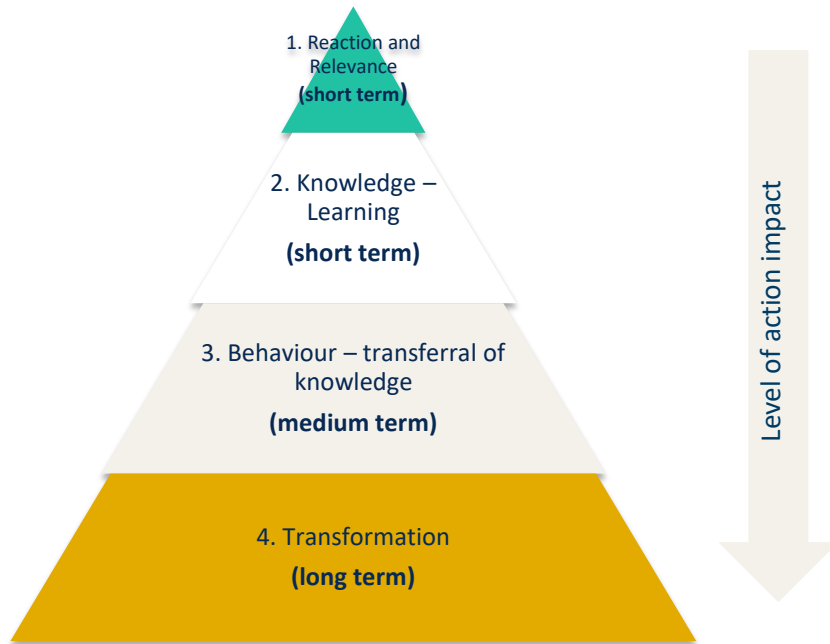


Figure 1. Pyramid representation of the levels of impact.